

Multi-Functional Platform Scales

HV/W-C & HV/W-CP *Series*



HV-C/HW-C series



HV-CP/HW-CP series

***For The Maximum
Possible Throughput***



AND ...Clearly a Better Value
A&D Company, Limited
<http://www.aandd.jp>

To Factory Managers Who Wish To Reduce Loss And Increase Productivity But Don't Know Where To Start

Simply changing scales can make dramatic differences. Is that really true? Here's how...

High-speed measurement—stabilization within 1 second (for the HV-C/CP series) *1

Fast-paced weighing is an essential prerequisite for streamlining operations.

*1 With the HV-C/CP series, stabilization takes not more than 1.5 seconds.

Bright and multi-colored 5-step LED comparator lights

With the clearly-discernible LED signals, check weighing (judging whether the measured weight is within the designated limits) becomes far more accurate and efficient than a numeric display alone, leading to a significant cost reduction. Comparison can be made in three levels, five levels, or even seven levels*2 for both normal weighing and piece counting.

*2 With no light indicating either end of the continuum

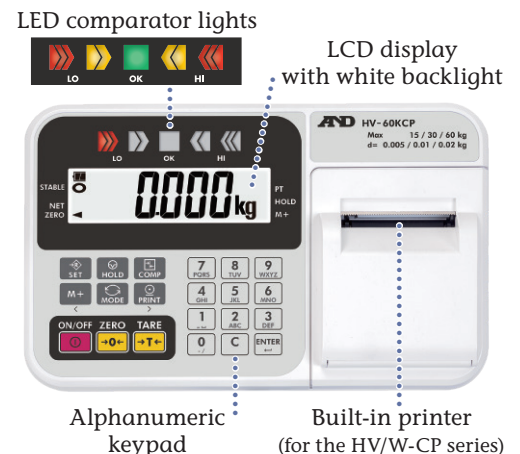
■ Auto-tare function

The scale can perform tare*3 automatically when the weight reaches the set target range, saving the operator from the hassle of pressing the TARE key each time for consecutive check weighing such as filling multiple cups.

*3 To offset the weight of the object on the scale and return the display to zero

■ Negative comparison

Negative values are also allowed for comparator limits. When combined with the auto-tare function, this enables "take-away" check weighing; that is, measuring out the target amount repeatedly by taking it out of its container with no key press.



Highly-visible, LCD display (25 mm character height) with white backlight

Do not underestimate the effect of display visibility on operators' work efficiency, fatigue and tendency to make errors, especially in areas where illumination is not sufficient.

Quick and easy settings using the alphanumeric keypad

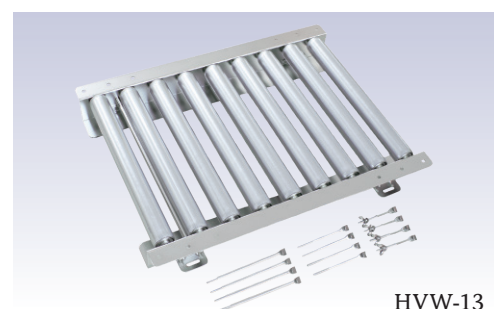
The direct alphanumeric input makes it simple and straightforward to enter/re-enter preset tare values, comparator limits, calibration values and various internal settings.

■ Key lock function

You can inhibit the use of certain keys to prevent operators from making unwanted changes to the scale settings.

Optional roller conveyers

Large and medium-size roller conveyers (HVW-13 and HVW-14 respectively) can make measurements of heavy objects in production lines smoother and quicker.



HVW-13

Built-in printer for creating paper-based records on the spot (for the HV/W-CP series)

In addition to normal printing, the printer enables GMP compliant output (including date & time*⁴, and the ID number of six alphanumeric characters that you set for the scale) and label printing without connecting to a separate printer.*⁵

*⁴ Although the HV/W-C series (version with no built-in printer) doesn't have a clock & calendar function, date and time can be printed using the optional AD-8127 compact printer.

*⁵ Barcode printing is not supported. It becomes possible, however, by using the Universal Flexi Coms (UFC) function, which lets you edit serial data output/printout format with an external printer.

Wide selection of capacities and resolutions

Select a scale that best suits your application and budget from either HV-C/CP series of three multi-interval*⁶ models and HW-C/CP series of four high-resolution models (see the specifications for details).

*⁶ The lighter the target object is, the finer the readability becomes.

IP65 dust & waterproof base unit with a stainless steel (SUS430) pan

The base unit can be washed with water, not to mention that wet objects can be weighed with no problem. Further, the surface of the pan is resistant to chemicals, scratches and rust, and easy to keep clean and hygienic.



IP65 base unit with a SUS430 pan

Three slots for optional data communication interfaces

Output data, enter commands, and change the scale settings externally via the USB (HVW-02CB)*⁷ or RS-232C (HVW-03C) interface. Either two USB interfaces, two RS-232C interfaces, or one of each can be installed, in addition to a comparator relay output/buzzer/contact input interface (HVW-04C), which enables signaling check weighing results by buzzer and/or external comparator (traffic) lights, as well as external key input (up to two commands).

*⁷ For communication with a PC only. The driver software can be downloaded for free.



Display unit with HVW-02CB, HVW-03C, and HVW-04C

Other Useful Features

- ✓ Display hold function that makes it easy to read and record the display value when external disturbances can occur unexpectedly
- ✓ Counting mode to count a number of small pieces of the same mass value instantly and precisely
- ✓ Accumulation (M+) function to display the sum total of separate weighing results
- ✓ Operation with either AC adapter or four D batteries (for the HV/W-C series)*⁸
- ✓ Display angle adjustable to four levels to suit the convenience of individual operators
- ✓ Optional 5 m extension cable (HVW-08C) and wall-mount bracket (HVW-11C) for the display unit available
- ✓ Display cover that protects the display unit from dirt and splashes provided as standard

*⁸ The battery life is approx. 1200 hours using alkaline batteries, with display backlight and LED comparator lights OFF. The HV/W-CP series operates on AC adapter only.

Specifications

		HV-15KC HV-15KCP	HV-60KC HV-60KCP	HV-200KC HV-200KCP	HW-10KC HW-10KCP	HW-60KC HW-60KCP	HW-100KC HW-100KCP	HW-200KC HW-200KCP
kg	Capacity	3 / 6 / 15* ⁱ	15 / 30 / 60* ⁱ	60 / 150 / 220* ⁱ	10	60	100	220
	Min. display	0.001 / 0.002 / 0.005* ⁱ	0.005 / 0.01 / 0.02* ⁱ	0.02 / 0.05 / 0.1* ⁱ	0.001	0.005	0.01	0.02
lb	Capacity	6 / 15 / 30* ⁱ	30 / 60 / 150* ⁱ	150 / 300 / 500* ⁱ	20	150	200	500
	Min. display	0.002 / 0.005 / 0.01* ⁱ	0.01 / 0.02 / 0.05* ⁱ	0.05 / 0.1 / 0.2* ⁱ	0.002	0.01	0.02	0.05
oz	Capacity	96 / 240 / 480* ⁱ	480 / 960 / 2400* ⁱ	2400 / 4800 / 8000* ⁱ	320	2400	3200	8000
	Min. display	0.05 / 0.1 / 0.2* ⁱ	0.2 / 0.5 / 1* ⁱ	1 / 2 / 5* ⁱ	0.05	0.2	0.5	1
lb-oz	Capacity	30 lb	N/A		20 lb	N/A		
	Min. display	0.1 oz			0.1 oz			
Counting mode	Max. countable number	150,000	120,000	110,000	100,000	120,000	100,000	110,000
	Number of samples	5, 10, 20, 50 or 100						
Stabilization time* ⁱⁱ	Within 1 second				Within 1.5 seconds			
Repeatability (std. deviation) [kg]	0.001 / 0.002 / 0.005	0.005 / 0.01 / 0.02	0.02 / 0.05 / 0.1	0.002	0.01	0.02	0.04	
Linearity [kg]	±0.001 / ±0.002 / ±0.005	±0.005 / ±0.01 / ±0.02	±0.02 / ±0.05 / ±0.1	±0.002	±0.01	±0.02	±0.04	
Sensitivity drift	±20 ppm / °C (5 °C to 35 °C / 41 °F to 95 °F)							
Display	7 segment LCD (Character height: 25 mm) with backlight 3-color, 5-step LED comparator lights							
Display update	10 times / second							
Operating temperature	-10 °C to 40 °C / 14 °F to 104 °F, 85% R.H. or less (no condensation)							
Power supply	HV/W-C series	AC adapter or four D batteries (approx. 1200 hours using alkaline batteries, with display backlight and LED comparator lights OFF)						
	HV/W-CP series	AC adapter						
Weighing pan size	250 × 250 mm 9.8 × 9.8 in	330 × 424 mm 13.0 × 16.7 in	390 × 530 mm 15.4 × 20.9 in	250 × 250 mm 9.8 × 9.8 in	330 × 424 mm 13.0 × 16.7 in	390 × 530 mm 15.4 × 20.9 in		
Dimensions (W × D × H)	275 × 474 × 368 mm 10.8 × 18.7 × 14.5 in	330 × 621 × 771 mm 13.0 × 24.5 × 30.4 in	390 × 712 × 773 mm 15.4 × 28.0 × 30.4 in	275 × 474 × 368 mm 10.8 × 18.7 × 14.5 in	330 × 621 × 771 mm 13.0 × 24.5 × 30.4 in	390 × 712 × 773 mm 15.4 × 28.0 × 30.4 in		
Weight (approx.)	HV/W-C series	6 kg / 13 lb	11 kg / 24 lb	17 kg / 37 lb	6 kg / 13 lb	11 kg / 24 lb	17 kg / 37 lb	
	HV/W-CP series	7 kg / 15 lb	12 kg / 26 lb	18 kg / 40 lb	7 kg / 15 lb	12 kg / 26 lb	18 kg / 40 lb	

*ⁱ Multi-interval: The lighter the target object is, the finer the readability becomes.

*ⁱⁱ Time required for the last digit to settle (the stabilization mark will be lit one second after), which is subject to the weighing environment, response characteristic setting and how the target object is placed.

Options

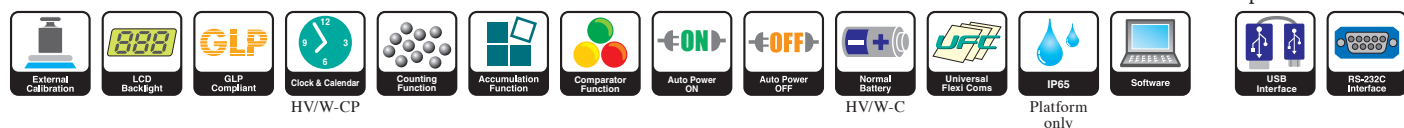
- HVW-02CB** USB interface (bi-directional, type-B)
- HVW-03C** RS-232C interface (D-Sub 9P)
- HVW-04C** Comparator relay output/buzzer/contact input interface
- HVW-08C** Extension cable (5 m)*ⁱⁱⁱ
- HVW-11C** Wall-mount bracket
- HVW-13** Large roller conveyer (for the 100 to 200 kg capacity models)
- HVW-14** Medium-size roller conveyer (for the 60 kg capacity models)

*ⁱⁱⁱ Recalibration is required after connecting the extension cable.



Accessories

- AD-8127** Compact printer
- AD-8526** Serial/Ethernet converter
- AD-8527** Quick USB adapter
- AD-8920A** Remote display
- AD-8922A** Remote controller
- AX-PP147-S** Paper for the built-in printer (5 rolls)
- AX-SW128** Foot switch



AND

...Clearly a Better Value

A&D Company, Limited

3-23-14 Higashi-Ikebukuro, Toshima-ku, Tokyo 170-0013 JAPAN
Telephone:[81](3) 5391-6132 Fax:[81](3) 5391-6148
http://www.aandd.jp

A&D ENGINEERING, INC.

1756 Automation Parkway, San Jose, CA 95131 U.S.A.
Telephone:[1](408) 263-5333 Fax:[1](408) 263-0119

A&D Australasia Pty Ltd.

32 Dew Street, Thebarton, South Australia 5031 AUSTRALIA
Telephone:[61](8) 8301-8100 Fax:[61](8) 8352-7409

A&D INSTRUMENTS LTD.

Unit 24/26 Blacklands Way Abingdon Business Park,
Abingdon, Oxon OX14 1DY UNITED KINGDOM
Telephone:[44](1235) 550420 Fax:[44](1235) 550485

<German Sales Office>

Hamburger Straße 30 D-22926 Ahrensburg GERMANY
Telephone:[49](0) 4102 459230 Fax:[49](0) 4102 459231

A&D KOREA Limited

817, Manhattan Bldg., 33, Gukjegeumyung-ro 6-gil,
Yeongdeungpo-gu, Seoul, 07331, KOREA
Telephone:[82](2) 780-4101 Fax:[82](2) 782-4280

A&D RUS CO., LTD.

Vereyskaya str.17, Moscow, 121357 RUSSIA
Telephone: [7] (495) 937-33-44 Fax: [7] (495) 937-55-66

A&D Instruments India Private Limited

509 Udyog Vihar Phase V
Gurgaon-122 016, Haryana, INDIA
Telephone:[91](124) 471-5555 Fax: [91](124) 471-5599